

# PRODUCT INFORMATION PACKET

Model No: 182THFW7729  
Catalog No: Y1999  
3,1800,TEFC,182TC,3/60/230/460  
1000:1 Speed Ratio



Regal and Marathon are trademarks of Regal Beloit Corporation or one of its affiliated companies.

©2018 Regal Beloit Corporation, All Rights Reserved. MC017097E





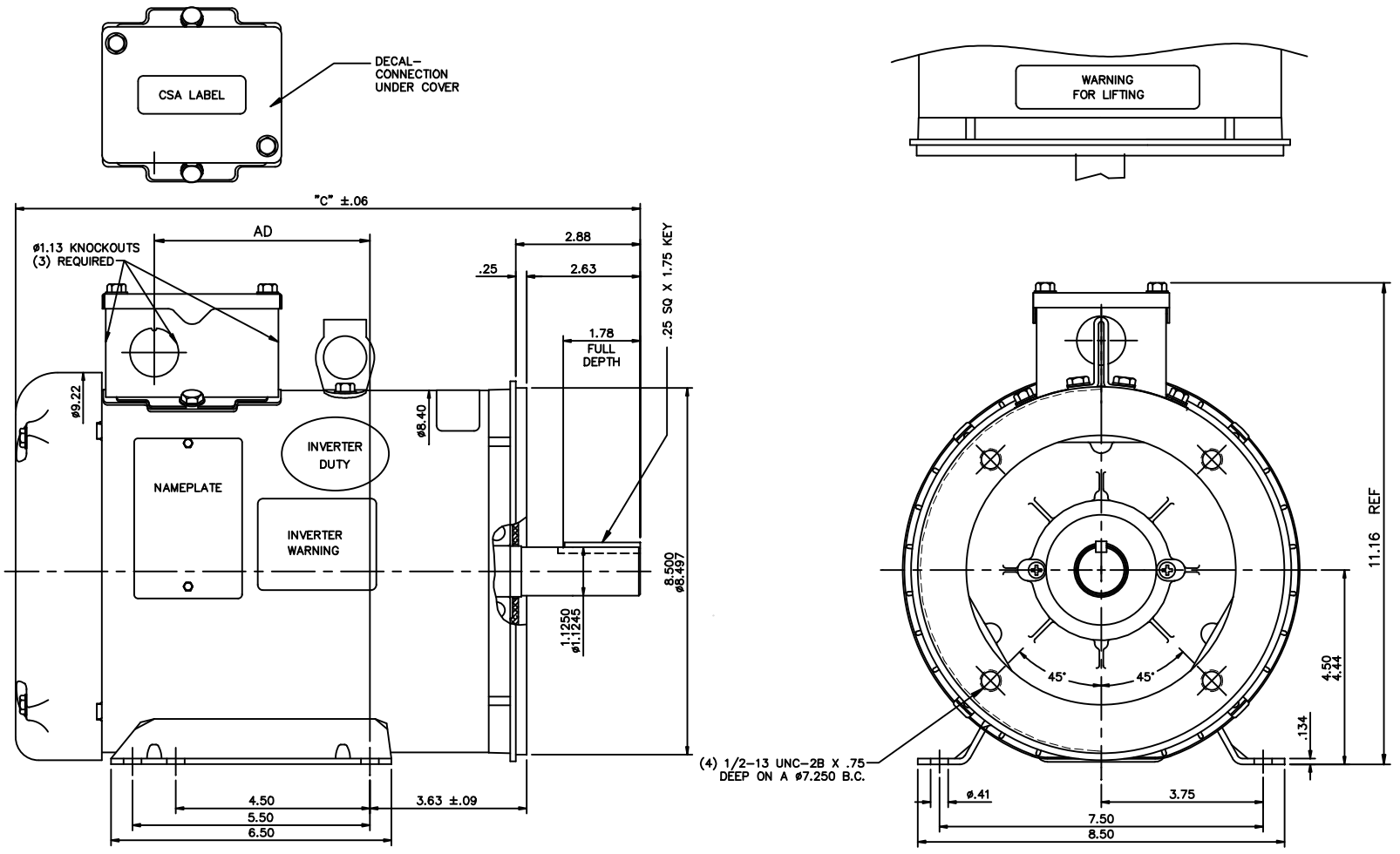
### Nameplate Specifications

Output HP	<b>3 Hp</b>	Output KW	<b>2.2 kW</b>
Frequency	<b>60 Hz</b>	Voltage	<b>230/460 V</b>
Current	<b>8.4/4.2 A</b>	Speed	<b>1765 rpm</b>
Service Factor	<b>1</b>	Phase	<b>3</b>
Efficiency	<b>87.5 %</b>	Duty	<b>Continuous</b>
Insulation Class	<b>H</b>	Design Code	<b>INV</b>
KVA Code	<b>K</b>	Frame	<b>182TC</b>
Enclosure	<b>Totally Enclosed Fan Cooled</b>	Overload Protector	<b>No</b>
Ambient Temperature	<b>40 °C</b>	Drive End Bearing Size	<b>6206</b>
Opp Drive End Bearing Size	<b>6205</b>	UL	<b>Recognized</b>
CSA	<b>Y</b>	CE	<b>Y</b>
IP Code	<b>43</b>		

### Technical Specifications

Electrical Type	<b>Squirrel Cage Inverter Duty</b>	Starting Method	<b>Inverter Only</b>
Poles	<b>4</b>	Rotation	<b>Reversible</b>
Mounting	<b>Bolt-on Base</b>	Motor Orientation	<b>Horizontal</b>
Drive End Bearing	<b>Ball</b>	Opp Drive End Bearing	<b>Ball</b>
Frame Material	<b>Rolled Steel</b>	Shaft Type	<b>T</b>
Overall Length	<b>13.97 in</b>	Frame Length	<b>8.50 in</b>
Shaft Diameter	<b>1.125 in</b>	Shaft Extension	<b>2.88 in</b>
Assembly/Box Mounting	<b>F3</b>		
Outline Drawing	<b>035554-850</b>	Connection Diagram	<b>005010.01ME</b>

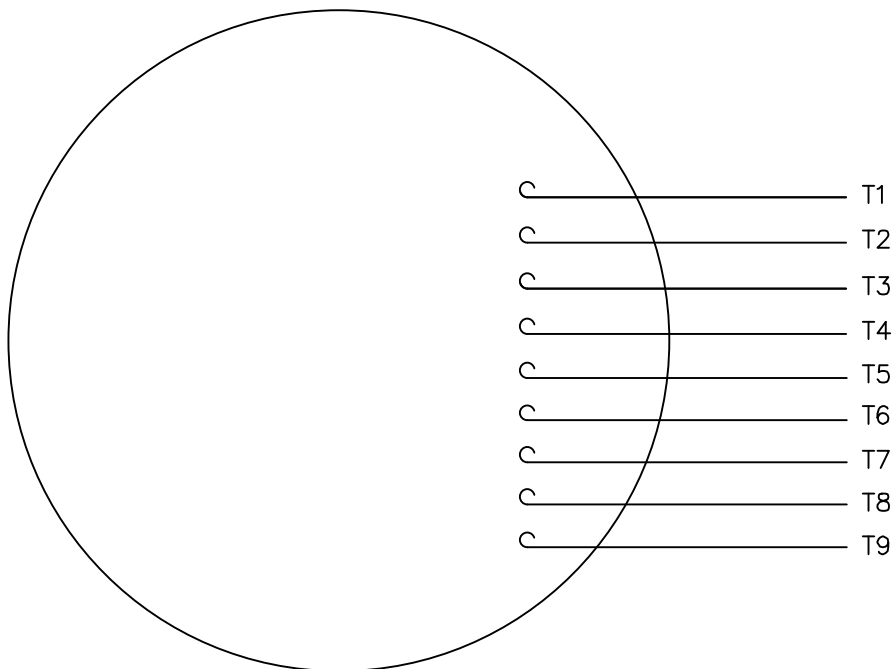
This is an uncontrolled document once printed or downloaded and is subject to change without notice. Date Created: 06/29/2018



GASKETS THROUGHOUT  
 MAXIMUM FACE RUNOUT TO BE .004 T.I.R.  
 MAXIMUM PILOT ECCENTRICITY TO BE .004 T.I.R.  
 PERMISSIBLE SHAFT RUNOUT TO BE .002 T.I.R.

DASH NO.	"C"	"AD"	TOLERANCES UNLESS SPECIFIED			DRAWN	WV	08/28/07			
			DEC.	INCHES							
850	13.97	4.50	.X	±.1				CHK			
900	14.47	5.00	.XX	±.03	TITLE	OUTLINE - 180TC FRAME		APPD			
950	14.97	5.50	.XXX	±.005	MAT'L	TEFC - RIGID "C"		SCALE 1=3			
1000	15.47	6.00	.XXXX	±.0005	FINISH			REF 035548			
1050	15.97	6.50	CHK	ANG ±1/2'	NO.			FMF 184TFW4073			
1100	16.47	7.00	REVISION		BY & DATE			PREV			
1150	16.97	7.50	01 ADD DECAL CONN. NOTE PER ISAAC 11-1389 LST 3/24/11 THIS DRAWING IN DESIGN AND DETAIL IS OUR PROPERTY AND MUST NOT BE USED EXCEPT IN CONNECTION WITH OUR WORK ALL RIGHTS OF DESIGN AND INVENTION ARE RESERVED THIS IS AN ELECTRONICALLY GENERATED DOCUMENT - DO NOT SCALE THIS PRINT			RFP	CAD FILE	035554	SIZE	DRAWING NO.	REV.
			DIST	NLV		B		035554			01

VIEW FROM OUTSIDE OF MOTOR AT SWITCH END.



VOLTAGE	L1	L2	L3	JOIN & INSULATE
HIGH	T1	T2	T3	(T4,T7) (T5,T8) (T6,T9)
LOW	T1,T7	T2,T8	T3,T9	T4,T5,T6

TOLERANCES UNLESS SPECIFIED		DRAWN RDW 04/12/02		MARATHON ELECTRIC		CHK		
DEC.	INCHES			TITLE		APPD		
.X	±.1			EXTERNAL WIRING DIAGRAM 3 PHASE W/O PROTECTOR		SCALE 1=1		
.XX	±.01			MAT'L. DECAL - 004014		REF FIG.2-51		
.XXX	±.005			FINISH		FMF		
.XXXX	±.0005			PREV				
NO.	REVISION	BY & DATE	CHK	ANG	±1/2"	DRAWING NO.		REV.
			RFP	04/12/02		CAD FILE	00501001ME	
			DIST			SIZE	A	005010-01ME

THIS DRAWING IN DESIGN AND DETAIL IS OUR PROPERTY AND MUST NOT BE USED EXCEPT IN CONNECTION WITH OUR WORK ALL RIGHTS OF DESIGN AND INVENTION ARE RESERVED THIS IS AN ELECTRONICALLY GENERATED DOCUMENT - DO NOT SCALE THIS PRINT



NONE	NONE	
NONE FT-LB	NONE V	NONE Hz

DATE: 06/27/2017 01:14:32 AM  
FORM 3531 REV.3 02/07/99  
\*\* Subject to change without notice.

Data Sheet

Date: 16-06-2017  
 Customer: \_\_\_\_\_  
 Attention: \_\_\_\_\_  
 Submitted by: FAREEDA DUDEKULA



182THFW7729

Submittal

Data @ 460 V

Motor Load Data

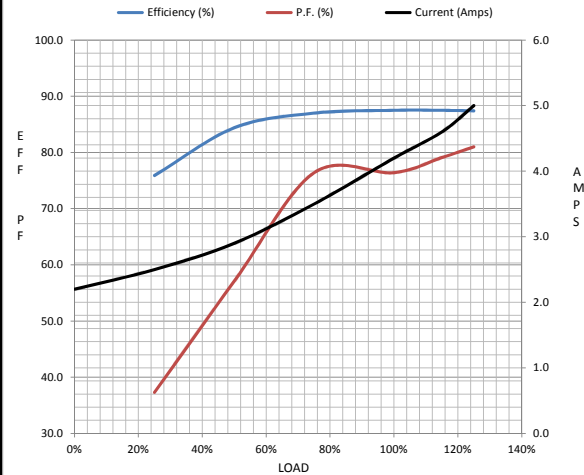
Load	0%	25%	50%	75%	100%	115%	125%	LR
Current (Amps)	2.20	2.50	2.90	3.5	4.2	4.6	5.0	33.3
Torque (ft-lb)	0.00	2.20	4.4	6.7	8.9	10.3	11.2	19.7
RPM	1800	1790	1780	1770	1765	1,760	1750	0
Efficiency (%)		75.9	84.4	87.0	87.5	87.5	87.4	
P.F. (%)	8.5	37.3	57.1	76.4	76.4	79.1	81.0	54.3

Motor Speed Data

	LR	Pull-Up	BD	Rated	Idle
Speed (RPM)	0	255	1500	1765	1800
Current (Amps)	33.3	30.0	20.4	4.2	2.20
Torque (ft-lb)	19.7	14.1	33.8	8.9	0.00

Information Block

HP	3.0			
Sync. RPM	1800			
Frame	182			
Enclosure	TEFC			
Construction	TFW			
Voltage	230/460 V			
Frequency	60 Hz			
Design	B			
LR Code letter	K			
Service Factor	1.15			
Temp Rise @ FL	0 ° C			
Duty	CONT			
Ambient	40 ° C			
Elevation	1,000 feet			
Rotor/Shaft wk <sup>2</sup>	0.38 Lb-Ft <sup>2</sup>			
Ref Wdg	T84176 FR			
Sound Pressure @ 1M	0 dBA			
VFD Rating	CONSTANT 20:1			
Outline Dwg	035554-850			
Conn. Diag	005010.01ME			
Additional Specifications:				
0				
365THFS8036				
EQUIV CKT (OHMS / PHASE)				
R1	R2	X1	X2	Xm
0.0000	0.0000	0.0000	0.0000	0.0000



Speed -Torque Curve

